

Standardized Water Pump / Thermal Oil Pump / Hot Water Pump

60 Hz

Etanorm, Etanorm SYT
Etanorm V
Etabloc, Etabloc SYT
Etanorm-R, Etanorm-RSY

Characteristic Curves Booklet



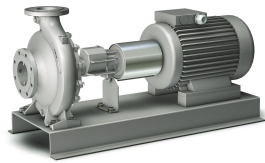
Centrifugal Pumps with Shaft Seal

Standardized Water Pump / Thermal Oil Pump / Hot Water Pump

Etanorm/ SYT/ V, Etabloc/ SYT, Etanorm-R/-RSY



Etanorm



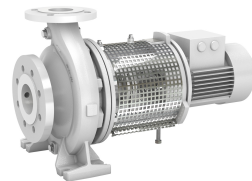
Etanorm SYT



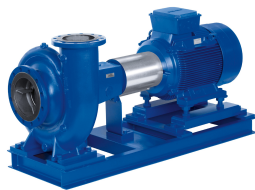
Etanorm V



Etabloc



Etabloc SYT



Etanorm-R



Etanorm-RSY

General

Acceptance test class: characteristic curves to ISO 9906 class 3B

NPSH values

The NPSH values indicated in the characteristic curves correspond to a head drop of 3 %.

NPSH values in low-flow conditions

NPSH values for flow rates below $Q = 0.3 \times Q_{opt}$ can only be measured with intense technical efforts. Evidence of NPSH values in the low-flow range cannot be provided.

Density of fluid handled

The indicated heads and performance data apply to fluids handled with a density $\rho = 1.0 \text{ kg/dm}^3$ and a kinematic viscosity ν of up to $20 \text{ mm}^2/\text{s}$. If the density $\neq 1.0$, the performance data must be multiplied by ρ . For viscosities $> 20 \text{ mm}^2/\text{s}$ the corresponding data for cold water has to be calculated and the impact on the pump's performance has to be determined.

Friction loss

For some design variants (reinforced bearings, specific shaft seals) friction losses must be considered and indicated as additional power requirement in the data sheet.

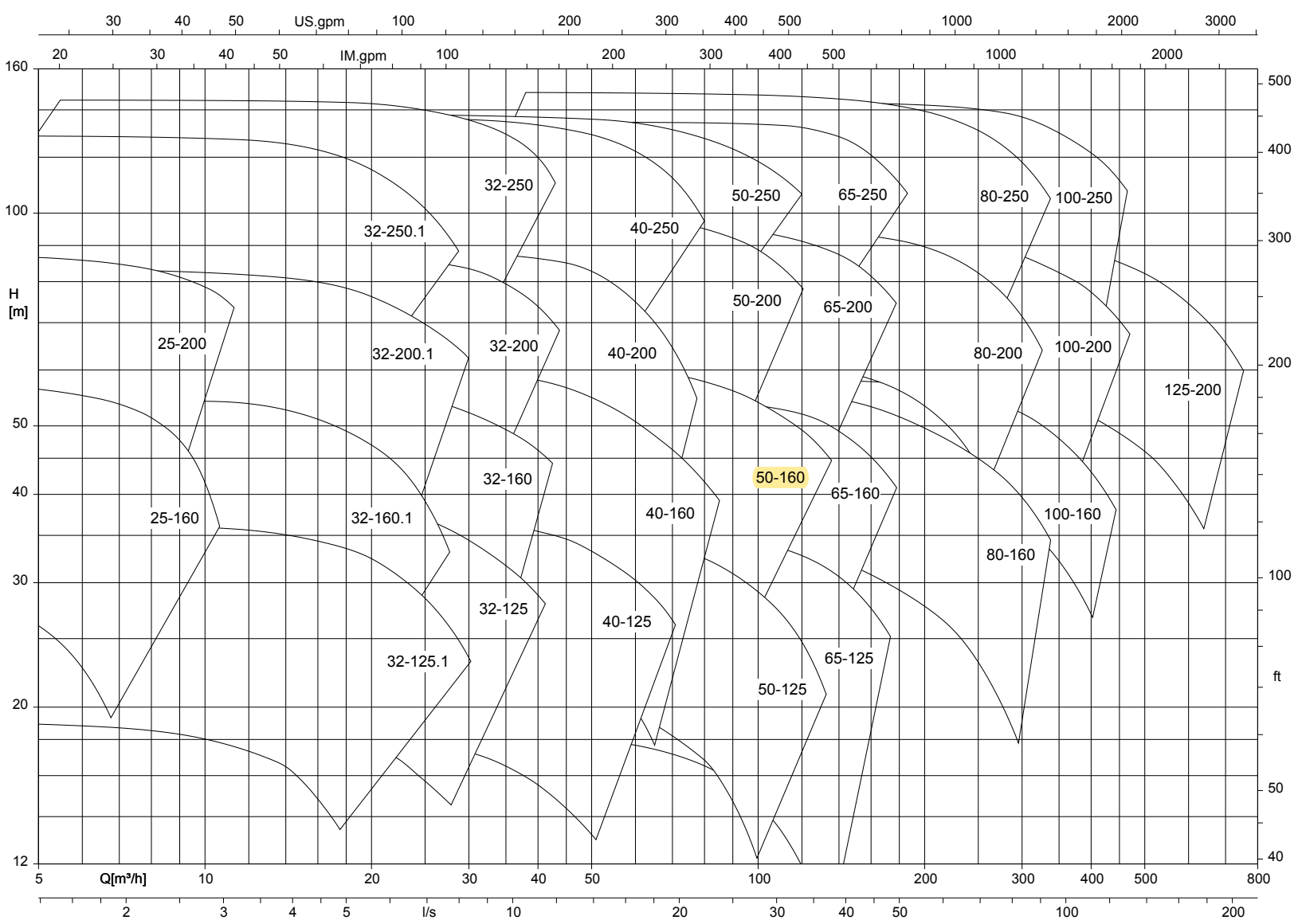
Correction factors

The characteristic curves apply to pumps with cast iron or bronze impellers.

- **Etanorm/SYT, Etabloc/SYT**
When using an impeller made of cast steel materials the efficiency and power of the corresponding pump sizes have to be multiplied by the correction factors indicated in the characteristic curves.
- **Etanorm-R/-RSY**
When using an impeller made of 1.4408 the efficiency percentages indicated in the characteristic curves have to be reduced by 2 % percent each.

Selection charts

Etanorm, n = 3500 rpm





KSB SE & Co. KGaA
Johann-Klein-Straße 9 • 67227 Frankenthal (Germany)
Tel. +49 6233 86-0
www.ksb.com

KSB Shanghai Pump Co., Ltd
1400 Jiangchuan Rd.
200245, Minhang, Shanghai, China
Tel. +86 21 64302888
www.ksb.com.cn

KSB Pumps and Valves (Pty.) Ltd
Cor. North Reef & Activia Roads, Activia Park: 1401 Germiston (Johannesburg)
Republic of South Africa
Tel. +27 (11) 876 5600
Fax +27 (11) 822 2013
E-Mail: sales@ksbpumps.co.za